



Radford

STUDIO CENTER

NEIGHBORHOOD MOBILITY MEETING (STEP II)

May 28, 2024

GOALS FOR TONIGHT'S MEETING



1. Project Status

- a. Project Overview
- b. EIR underway (City is Lead Agency)
- c. Neighborhood Traffic Management Plan & Mobility Process Overview

2. Recap of Past Meeting

- a. Existing Conditions
- b. LADOT Toolbox
- c. Neighborhood Ideas

3. Responding to Feedback

- a. Project Mobility Elements
- b. Community Input

4. Next Steps

- a. Draft EIR Study Summary
- b. Prepare for NTMP Planning Effort



INVITING THE COMMUNITY TO LEARN ABOUT THE PROJECT

NEARLY 100 YEARS OF CONTINUED USE

Radford



INCREASING THE NUMBER & VARIETY OF SOUNDSTAGES

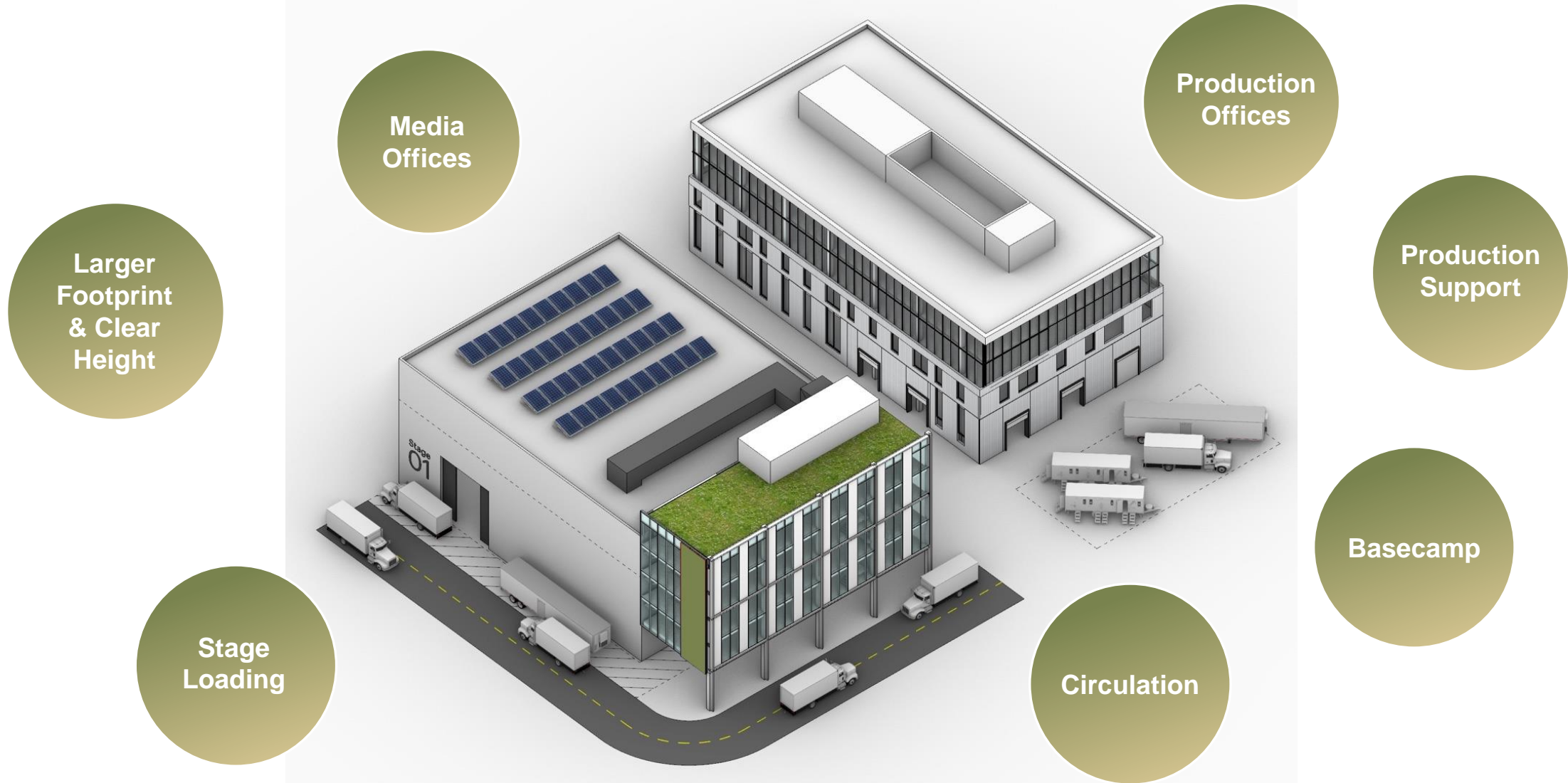
Radford



RADFORD TODAY



MODERN STUDIO ECOSYSTEM REQUIREMENTS

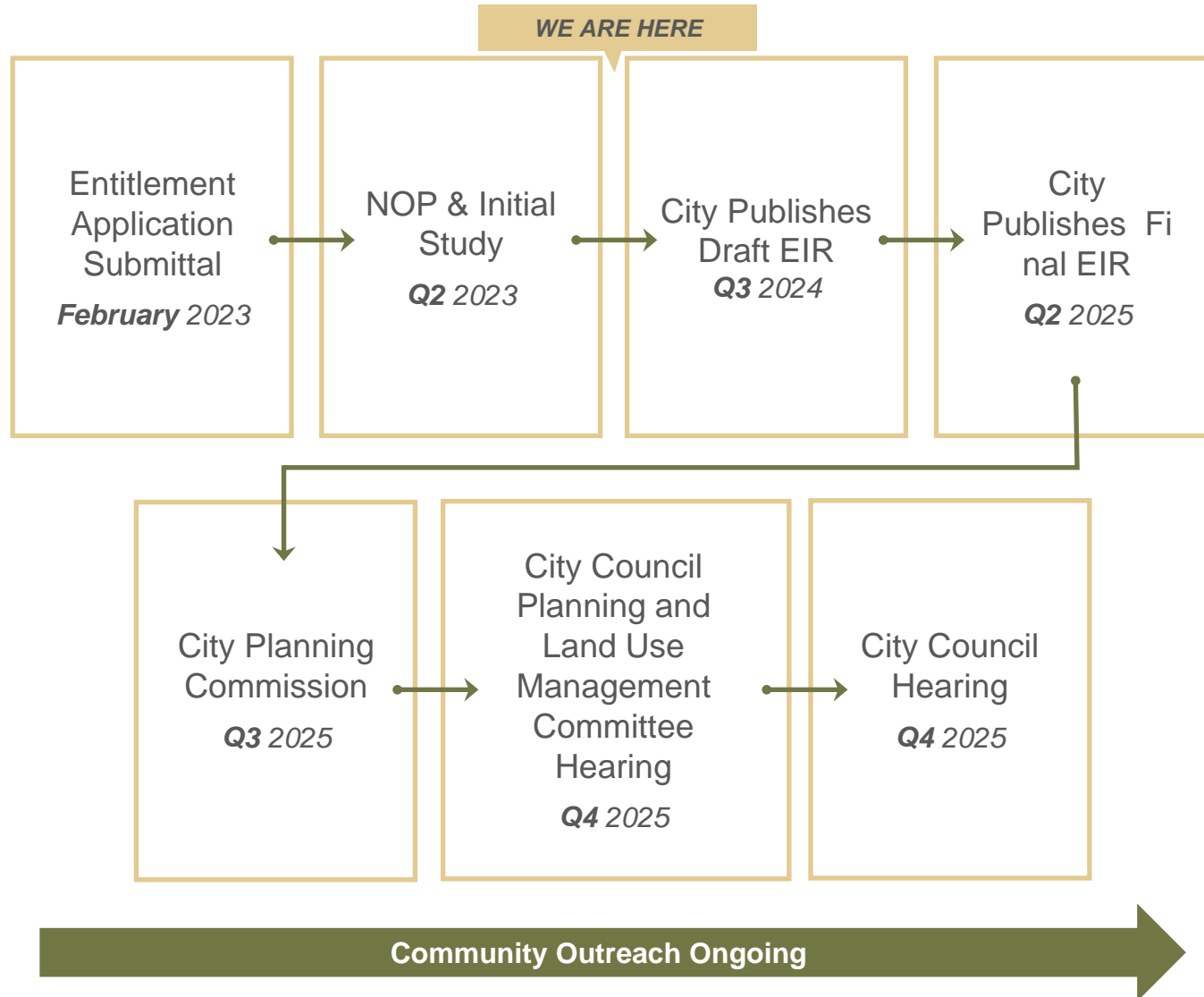


RADFORD MODERNIZATION PLAN



Sound Stage	450K SF
Production Support	300K SF
Production Office	725K SF
Creative Office	700K SF
Retail	25K SF
TOTAL	2,200,000 SF

PROPOSED ENTITLEMENTS & ANTICIPATED EIR TIMELINE



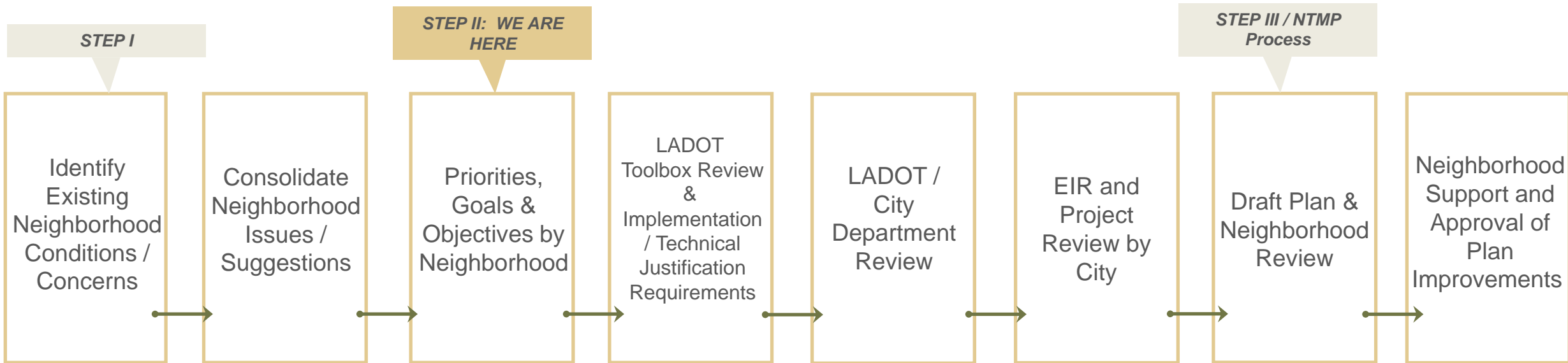
Proposed Entitlements

- Certification of Environmental Impact Report (EIR)
- General Plan Amendment (GPA)
- Zone Change (ZC) from the existing [Q] M2-1-RIO and [Q] MR2-1L-RIO to the Radford Studios Specific Plan
- Creation of a Specific Plan (SP) and code amendment to establish the Radford Studios Specific Plan w/ Design Guidelines
- Development Agreement
- Sign District

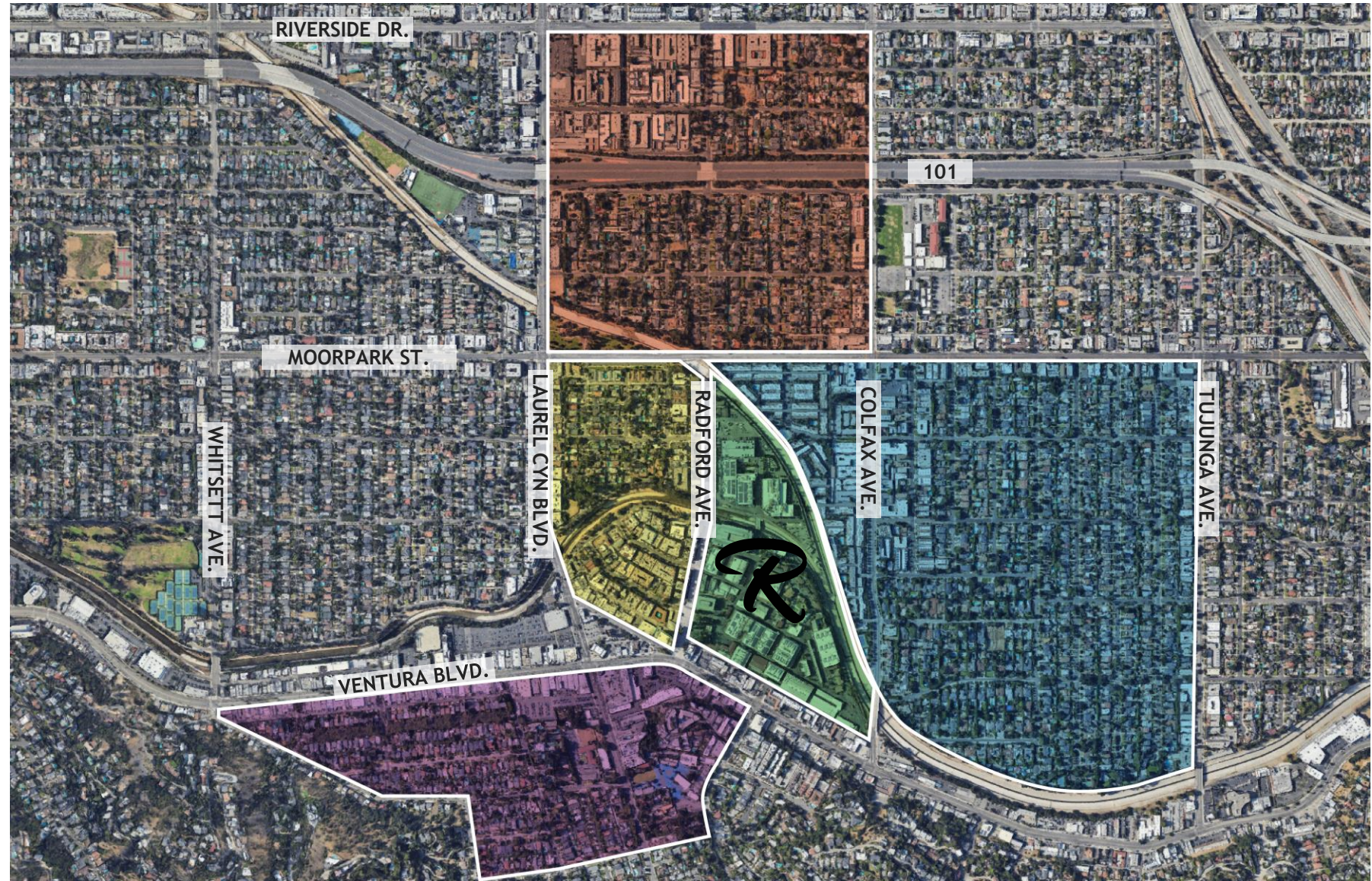
WORKSHOP ANALYSIS & NEIGHBORHOOD IDEAS



As part of the planning and environmental clearance process, the Radford Studio Center (RSC) team is proactively working with the neighboring communities through the following LADOT Neighborhood Mobility Planning Process:



NEIGHBORHOOD SPECIFIC MEETINGS IN Q4 2023



LEGEND:

-  Moorpark/Landale
-  Radford
-  Colfax
-  Ventura
-  RSC

ANALYSIS OF NEIGHBORHOOD WORKSHOP FEEDBACK



Key Priorities Heard:

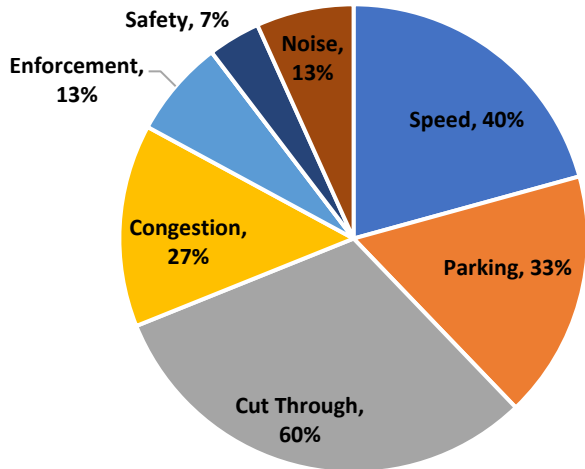
- Reduce congestion and neighborhood cut-through traffic
- Reduce speeds through neighborhood and alleys, and improve safety
- Preserve parking for neighbors, and improve parking restriction enforcement
- Minimize potential conflict with school-related traffic/queuing
- Limit construction and traffic noise

SUMMARY OF FEEDBACK PROVIDED

*Landale Square meeting held on Oct. 17. Results included in Moorpark chart.

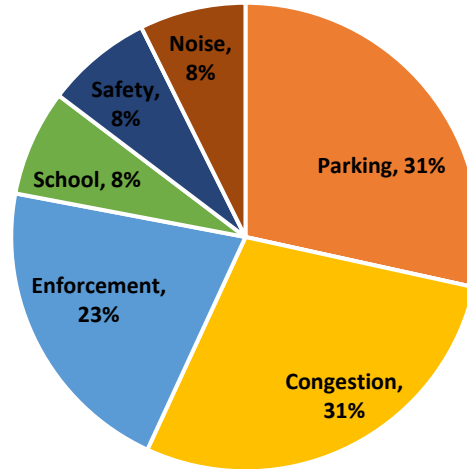
RADFORD NEIGHBORHOOD

Held on 10/10/23



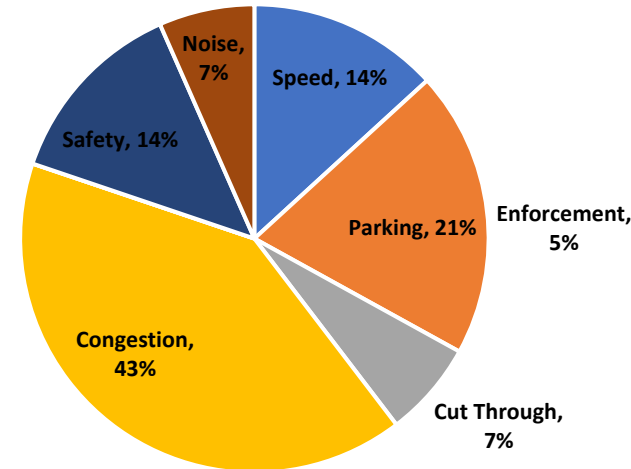
VENTURA NEIGHBORHOOD

Held on 10/16/23



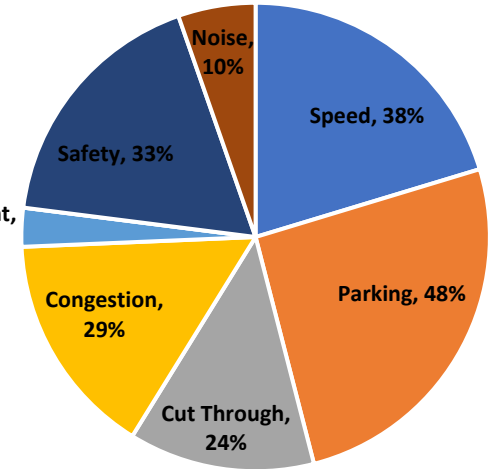
MOORPARK/LANDALE SQUARE NEIGHBORHOOD

Held on 10/24/23



COLFAX NEIGHBORHOOD

Held on 10/26/23



LADOT TOOLBOX



- Toolbox matches solutions to specific neighborhood mobility issues
- Analysis of existing conditions and neighborhood consensus
- Technical study requirements and process
- Approved and used by LADOT throughout the City

	PHYSICAL DEVICE / ACTION	USE	EFFECTIVENESS						COST	
		A = Arterial	Volume Reduction	Speed Reduction	Directional Control	Noise	Safety	Emergency Response Time	Implementation	Maintenance
		C = Collector								
L = Local										
A	Roadway Narrowing - Center Median	All	Yes	Yes	Yes	Decrease	Increase	No Effect	High	Low
B	Roadway Narrowing - Reduced Lane Width	All	Possible	No	No	Decrease	Possible Increase	No Effect	Low-Mod	Low
C	Roadway Narrowing - Reduced Number of Lanes	A	Possible	No	No	Decrease	Possible Decrease	Possible Increase	Low-Mod	Low
D	Roadway Narrowing - Midblock Neckdown	All	No	Yes	Yes	Decrease	Increase	Possible Increase	Mod-High	Mod
E	Roadway Narrowing - Corner Curb Extension	All	No	No	No	Decrease	Increase	No Effect	Mod-High	Mod
F	Roundabout	A,C	No	No	No	Decrease	Possible Increase	No Effect	High	High
G	Traffic Circle	C,L	No	No	No	Decrease	Possible Increase	Increase	High	High
H	Gateway / Entry Island	C,L	Likely	No	No	Decrease	Increase	No Effect	Low-Mod	Mod
I	Choker	All	No	No	No	No Effect	Possible Increase	No Effect	Mod	Low-Mod
J	Curvilinear Street	C,L	Possible	No	No	Possible Decrease	Possible Decrease	Increase	High	High
K	Realigned Intersection	C,L	Yes	Yes	Yes	Decrease	Increase	Increase	High	Mod
L	Restricted Movement Barrier	C,L	Yes	Yes	Yes	Decrease	Increase	Possible Increase	Mod	Low-Mod
M	Entrance Barrier	C,L	Yes	Yes	Yes	Decrease	Increase	Increase	Mod-High	Low-Mod
N	Diverter - Diagonal	C,L	Yes	Yes	Yes	Decrease	Increase	Increase	Mod-High	Low-Mod
O	Diverter - Star	C,L	Yes	Yes	Yes	Decrease	Increase	Increase	Mod-High	Low-Mod
P	Diverter - Truncated Diverter	C,L	Yes	Yes	Yes	Decrease	Increase	Increase	Mod-High	Low-Mod
Q	Diverter - Forced Turn	C,L	Yes	Yes	Yes	Decrease	Increase	Increase	Mod-High	Low-Mod
R	Intersection Cul-de-sac	L	Yes	Yes	Yes	Decrease	Increase	Increase	Mod-High	Low-Mod
S	Midblock Cul-de-sac	L	Yes	Yes	Yes	Decrease	Increase	Increase	Mod-High	Low-Mod
T	Speed Hump	C,L	Likely	No	No	Increase	Increase	Increase	Low-Mod	Low
U	Speed Table	C,L	Likely	No	No	Increase	Increase	Increase	Mod-High	Low-Mod
V	Raised Intersection	C,L	Unlikely	No	No	Increase	Increase	Increase	High	Mod
W	Pedestrian Island	A,C	Unlikely	No	No	Possible Decrease	Increase	Increase	Mod-High	Low-Mod
X	Raised Crosswalk	C,L	Unlikely	No	No	Increase	Increase	Increase	Mod-High	Low

	OPERATIONAL DEVICE / ACTION	USE	EFFECTIVENESS						COST	
		A = Arterial	Volume Reduction	Speed Reduction	Directional Control	Noise	Safety	Emergency Response Time	Implementation	Maintenance
		C = Collector								
L = Local										
AA	Crosswalk Strobeights	All	Unlikely	Possible	No	Possible Increase	Increase	No Effect	Mod-High	Mod
BB	Pedestrian Signal	All	Unlikely	Possible	No	Possible Increase	Increase	No Effect	Mod	Mod
CC	Traffic Signal	A,C	Unlikely	Likely	No	Possible Increase	Possible Increase	No Effect	Mod-High	Mod
DD	All Way STOP	C,L	Mixed	Mixed	No	Increase	Possible Increase	Increase	Low	Low
EE	Turn Prohibition	All	Yes	Likely	Yes	No Effect	Increase	No Effect	Low	Mod-High
FF	Speed Limit	All	No	Likely	No	No Effect	Mixed	No Effect	Low	Mod-High
GG	Police Enforcement	All	No	Likely	No	No Effect	Temporary Increase	No Effect	Mod-High	Mod-High
HH	Photo Radar	All	No	Yes	No	No Effect	Temporary Increase	No Effect	Mod-High	Mod-High
II	Red Light Run Camera	All	No	Likely	No	No Effect	Increase	No Effect	Mod-High	Mod-High
JJ	Speed Trailer	All	No	Yes	No	No Effect	Temporary Increase	No Effect	Mod-High	Mod-High
KK	One-way Street	All	No	No	Yes	No Effect	Increase	No Effect	Mod-High	Low

LADOT TOOLBOX VISUALIZED

EXAMPLES OF LOCAL STREET TREATMENTS

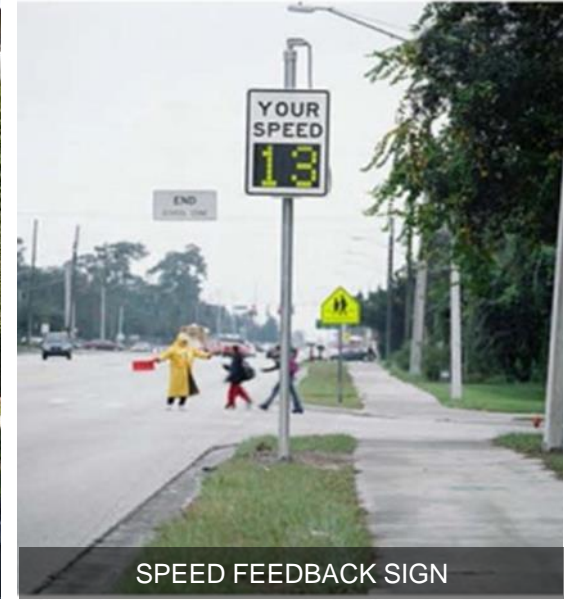
Radford



ALL WAY STOP CONTROL



PEAK HOUR TURN RESTRICTIONS



SPEED FEEDBACK SIGN



LANE STRIPING & INTERSECTION NARROWING



SPEED HUMPS/ TABLES



INTERSECTION TREATMENTS

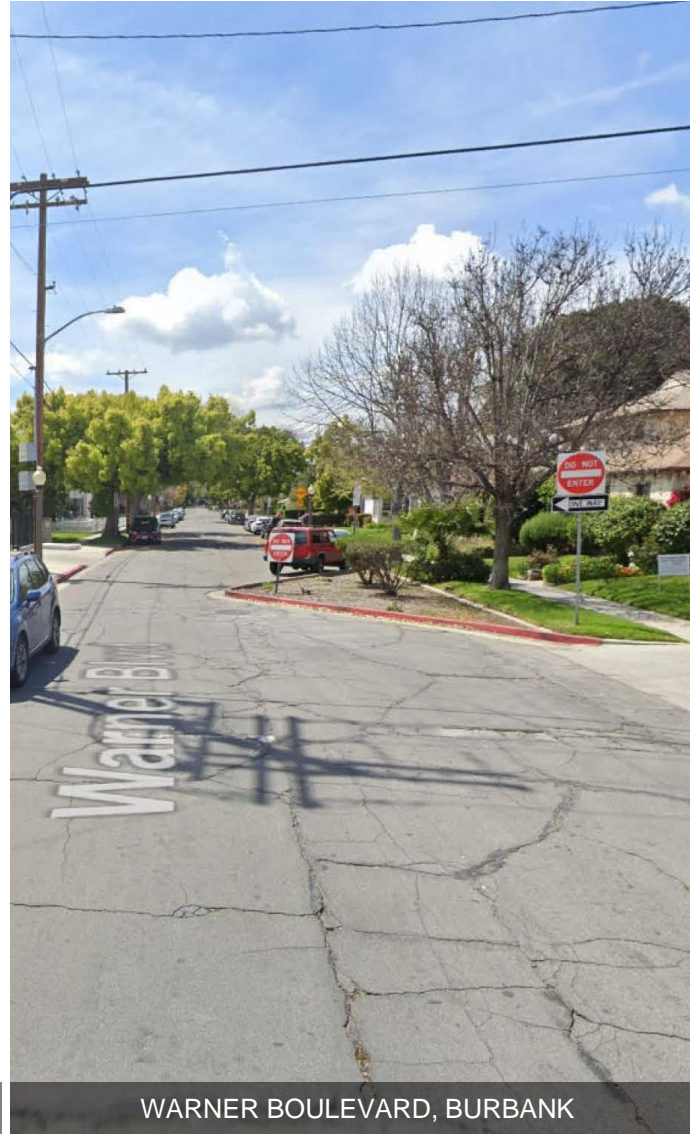
LADOT TOOLBOX VISUALIZED

EXAMPLES OF LOCAL STREET RESTRICTIONS

Radford



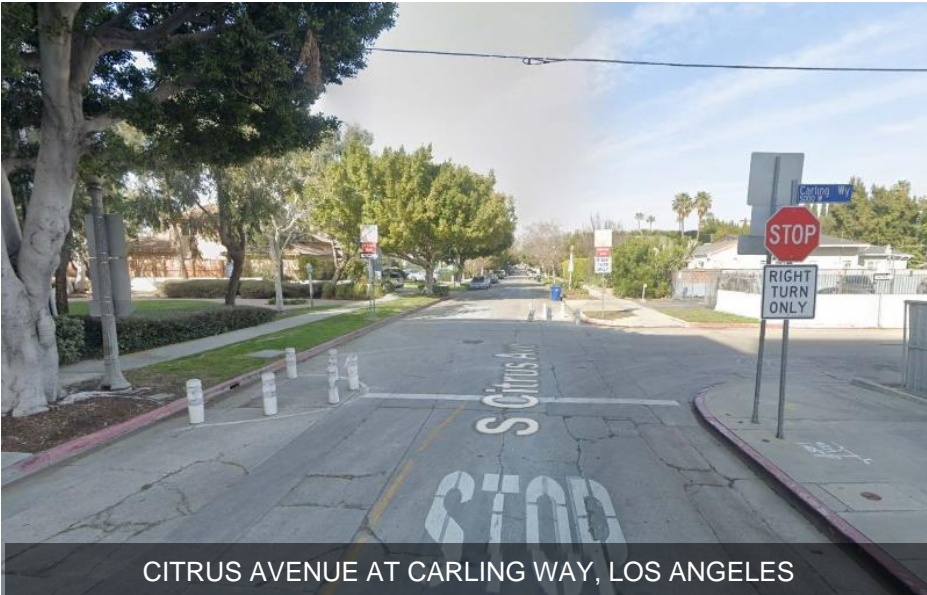
MEDIA DISTRICT, BURBANK



WARNER BOULEVARD, BURBANK



HAYDEN PLACE & HIGUERA STREET, CULVER CITY



CITRUS AVENUE AT CARLING WAY, LOS ANGELES



MOORPARK STREET NORTH OF AGNES AVE, LOS ANGELES

RECAP: RADFORD COMMUNITY IDEAS

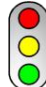



NEIGHBOR RECOMMENDED TRAFFIC CALMING IDEAS

- Two new "STOP" signs on Valleyheart Dr. & Woodbridge St
- 3 new signals on Laurel Canyon Boulevard
- 1 new signal on Radford Avenue
- New residential preferential parking district
- Increased enforcement of "No Right -Turn" out of studio parking
- Improved alley parallel to Ventura Boulevard



LEGEND:

-  Neighbor Recommended Improvement (color)
-  Existing Conditions (black & white)

RECAP: VENTURA COMMUNITY IDEAS




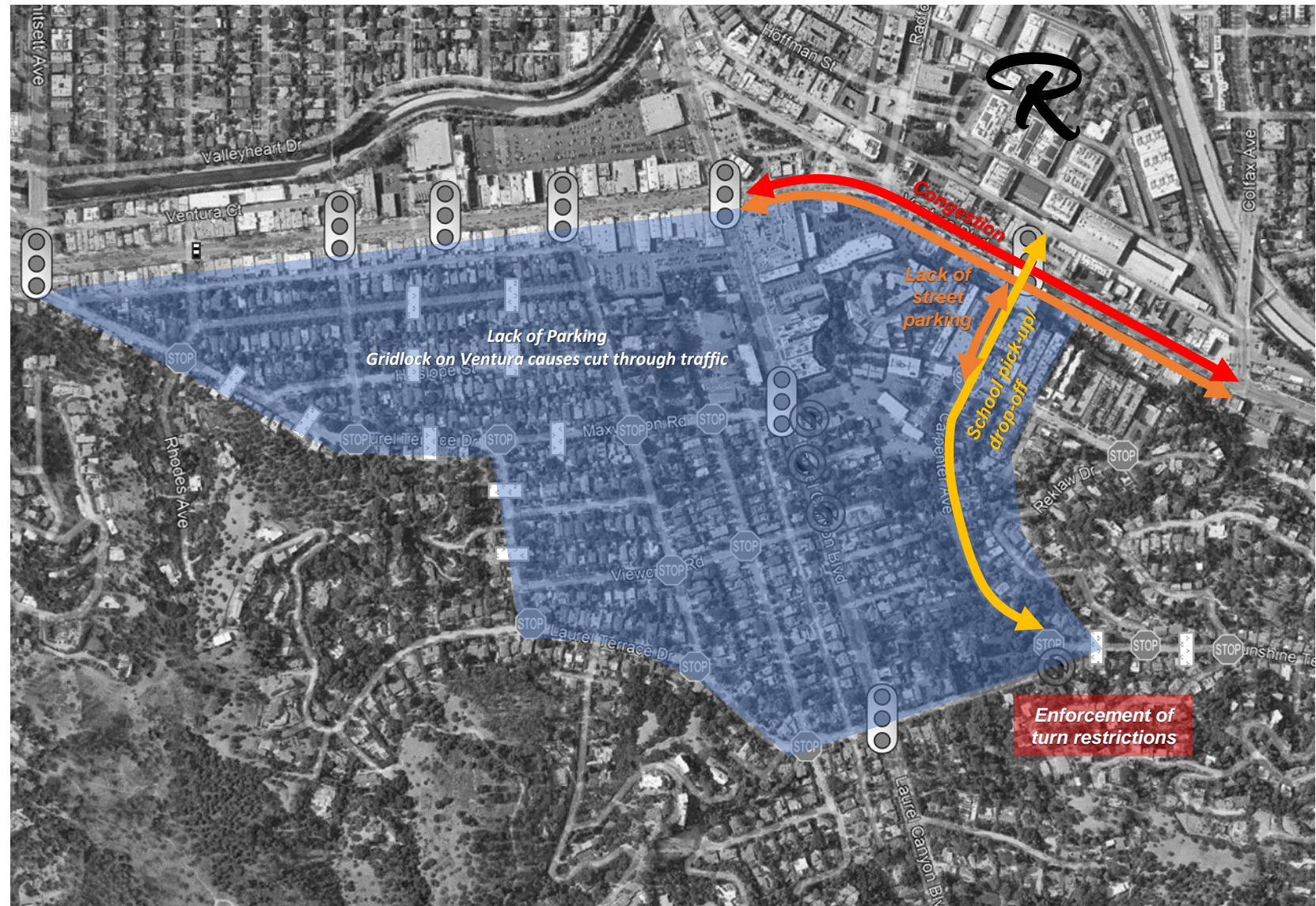
NEIGHBOR RECOMMENDED TRAFFIC CALMING IDEAS

- Enforcement of turn restrictions
- Improved intersection at Carpenter Avenue
- Improved alley parallel to Ventura Boulevard

LEGEND:

 Neighbor Recommended Improvement (color)

 Existing Conditions (black & white)



RECAP: MOORPARK/LANDALE SQUARE COMMUNITY IDEAS

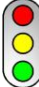



NEIGHBOR RECOMMENDED TRAFFIC CALMING IDEAS

- Two new "STOP" signs on Landale Street
- One new signal on Carpenter Avenue
- Three new peak-hour turn restrictions on Moorpark Street
- New "No Right-Turn" sign on Moorpark Street from Radford Avenue
- Improved alley parallel to Ventura Boulevard



LEGEND:

-  Neighbor Recommended Improvement (color)
-  Existing Conditions (black & white)

RECAP: MOORPARK/LANDALE SQUARE COMMUNITY

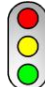



NEIGHBOR RECOMMENDED TRAFFIC CALMING IDEAS

- Block off Carpenter Avenue, Morella Avenue, and Simpson Avenue at Moorpark Street
- Right turn only heading southbound from Radford Avenue to Moorpark Street
- No access northbound on Radford Avenue from Moorpark Street
- No left turn lane onto Moorpark Street heading westbound onto Radford Avenue
- New "STOP" sign at Landale St and Gentry Ave
- New "STOP" sign at Landale Street and Ben Avenue
- New FLOCK Safety Cameras at all entrances into Landale Square
- Adopt existing median on the 4500 block of Radford Ave and Sarah Street (at the 101 Freeway)



LEGEND:

-  Neighbor Recommended Improvement (color)
-  Existing Conditions (black & white)

RECAP: COLFAX COMMUNITY IDEAS





NEIGHBOR RECOMMENDED TRAFFIC CALMING IDEAS

- New residential preferential parking district
- One new signal on Moorpark Street at Carpenter Avenue
- One new signal on Colfax Avenue at Acama Street
- New speed feedback sign on Colfax Avenue
- Two new "No Outlet" signs at Troost Avenue and Beck Avenue



LEGEND:

-  Neighbor Recommended Improvement (color)
-  Existing Conditions (black & white)

An architectural rendering of a modern building with large glass windows and a courtyard area. The building is on the left, with people visible inside. In the foreground, there is a paved area with a crosswalk, a metal fence, and several people walking. A sign for 'Radford' and 'BADEFORD GATE' is visible in the middle ground. The background features more buildings, trees, and a clear sky.

PROJECT DESIGN MOBILITY ELEMENTS

MOBILITY ELEMENTS PROVIDED BY PROJECT



Neighborhood Priorities	Project Mobility Elements
Improve vehicular trip distribution	New Gates: Carpenter & Moorpark
Ensure no on-street vehicle queuing	Increased Inbound Gate Storage (increase queuing)
Ensure adequate on-site parking for all studio users	Additional On-Site Parking
Promote alternate mobility options and reduce total vehicles	TDM Program: On-Site Mobility Hub(s) Pedestrian & Bicycle Connections
Improve community bicycling and walkability	Los Angeles River Connector at Radford and Moorpark
Ensure construction staging occurs on-site	Construction Management Plan

IMPROVE VEHICULAR TRIP DISTRIBUTION

Radford

Carpenter Gate

- Improved signalized intersection
- Increases pedestrian and bike safety at Carpenter Ave. to Ventura Blvd.
- Traffic signal improvements address congestion related to site operations and school drop-off
- Distributes traffic more evenly between gates minimize traffic impacts and queuing concerns

Moorpark Gate

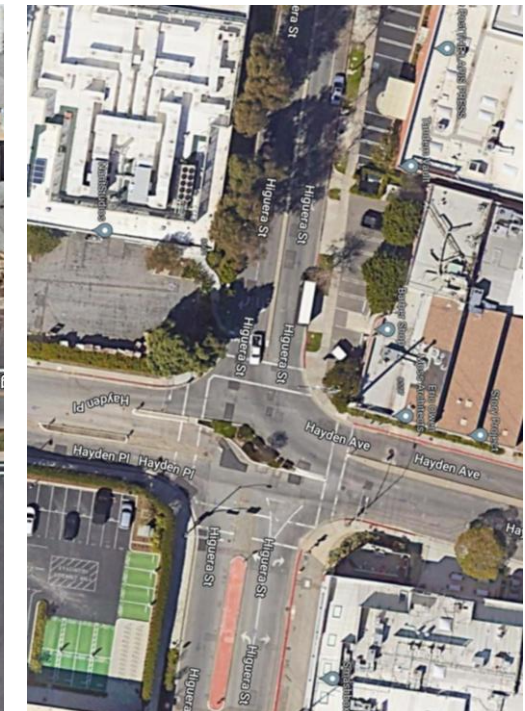
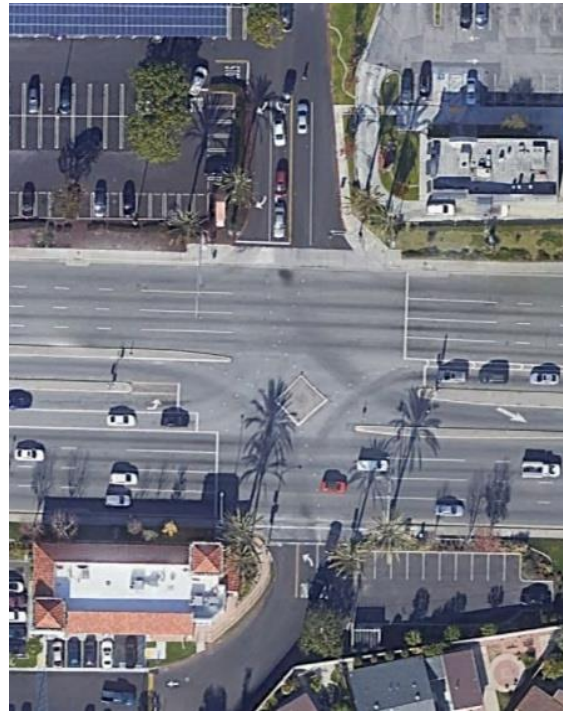
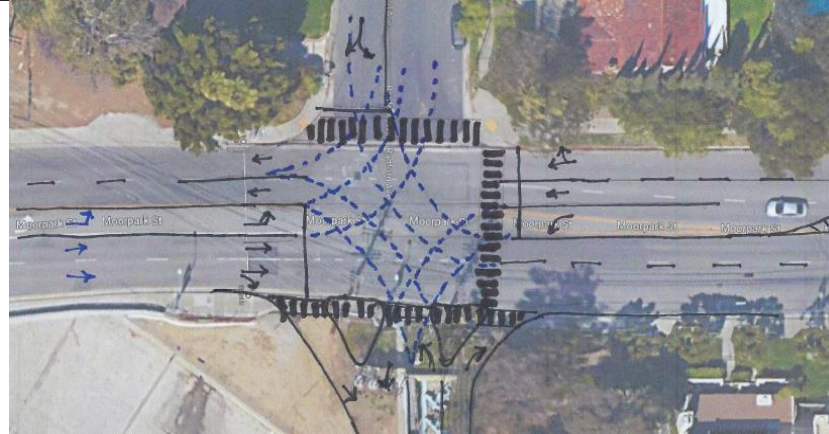
- Improves pedestrian and bike safety via new signal at Moorpark St. & Radford Ave.
- Reduces speeding on Moorpark St.
- Traffic signal improvements address congestion related to site operations.
- Includes Right and Left turn limitations onto Moorpark St. To eliminate cut through traffic
- Provides new Class IV bike lane and pedestrian connection from Moorpark St. to the LA River Bike Path and Ventura Blvd.
- Distributes traffic more evenly between gates to minimize traffic impacts and queuing concerns



ENSURE NO CUT-THROUGH TRAFFIC AT MOORPARK AVE

Radford

- Preliminary conceptual sketches to convey community concerns relative to cut-through traffic
- Analysis of existing conditions and neighborhood consensus
- Technical study requirements and process
- Approved and used by LADOT throughout the City



INCREASE GATE VEHICLE CAPACITY

Railford

Modified & Modernized Gates

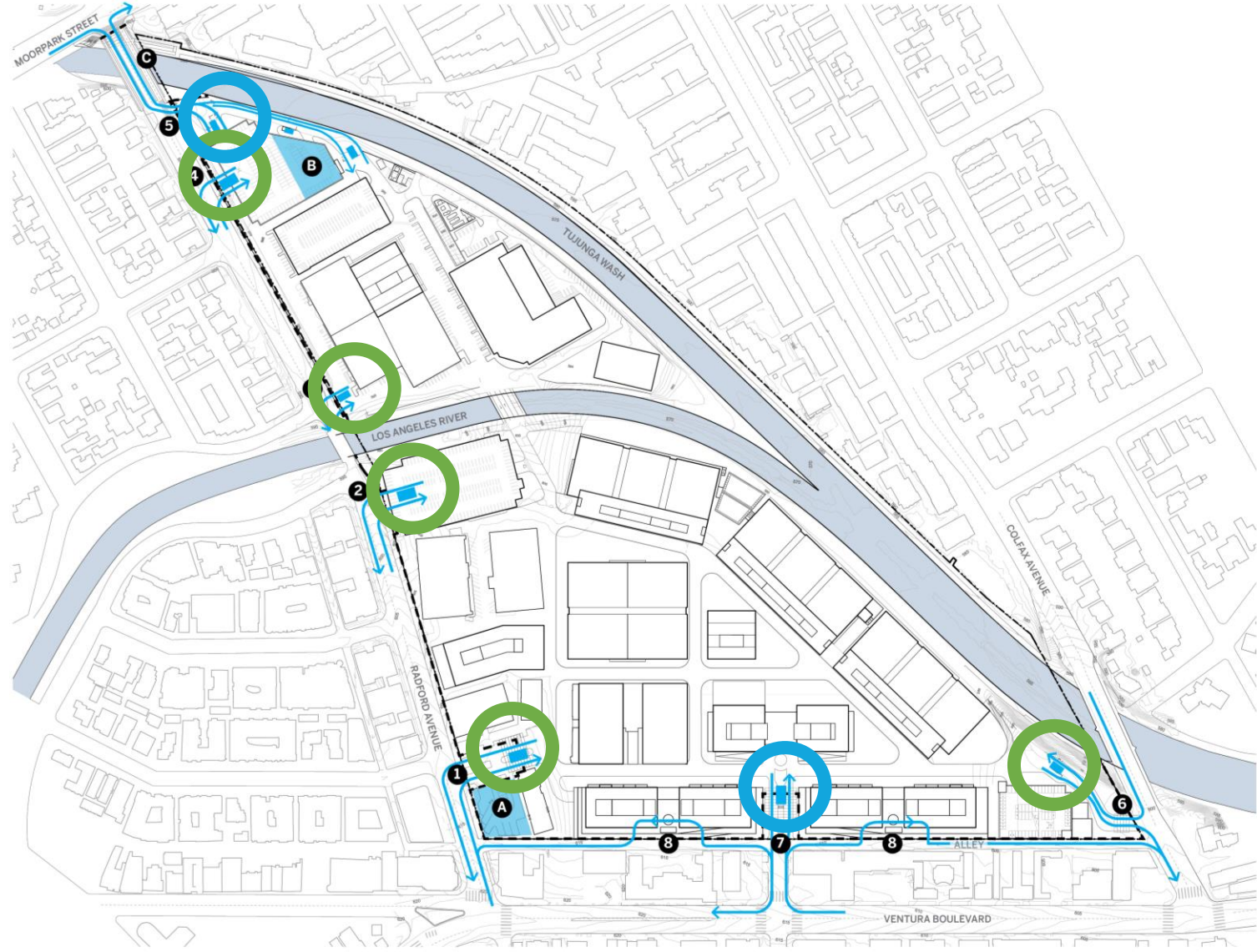
- Relocates or increases the number of security gates at each access point
- Security gates shifted further into the property to maximize inbound queuing capacity
- Improved and modernized gate technology to streamline access



INCREASE GATE VEHICLE CAPACITY



- Expanded queuing capacity at Radford and Colfax gates
- New gate entry points to be setback to provide increased queuing capacity
- Upgraded control technology to improve processing time to be implemented at all gates to



LEGEND:



Existing Gate



Proposed Gate

PROVIDING ADEQUATE STUDIO PARKING



On-Site Parking

- 2,170 existing stalls to remain
- 3,880 proposed new stalls

North Lot

- Existing parking structure to remain
- New parking structure with 5 levels above grade and 2 levels below grade at the Moorpark Gate

South Lot

- Existing parking structure to remain
- New subterranean parking with 3 levels of below grade parking directly accessible from the Carpenter Gate.
- New parking structure with 6 levels above grade at Colfax Gate



PROVIDE ADEQUATE STUDIO PARKING



On-Site Parking

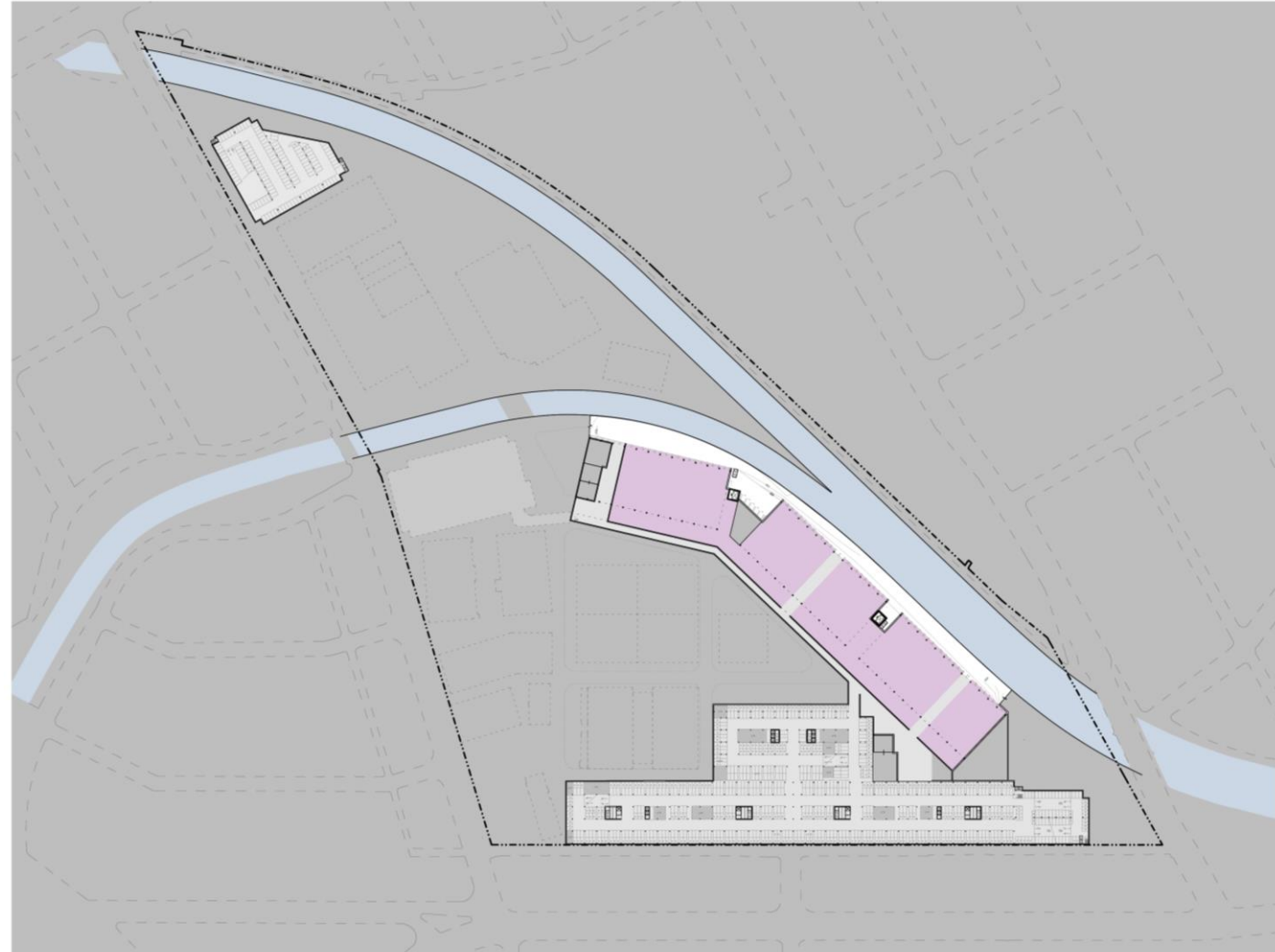
- 2,170 existing stalls to remain
- 3,880 proposed new stalls

North Lot

- Existing parking structure to remain
- New parking structure with 5 levels above grade and 2 levels below grade at the Moorpark Gate

South Lot

- Existing parking structure to remain
- New subterranean parking with 3 levels of below grade parking directly accessible from the Carpenter Gate.
- New parking structure with 6 levels above grade at Colfax Gate
- New basecamp/production support space



INCLUDE PROJECT MOBILITY FEATURES & PROGRAMS

Radford



RSC SHUTTLE PROGRAM



SHARED-RIDE PICKUP DROPOFF AREAS



METRO EMPLOYER PASS PROGRAM



METRO VANPOOL PROGRAM



METRO BIKE-SHARE FOR BUSINESS



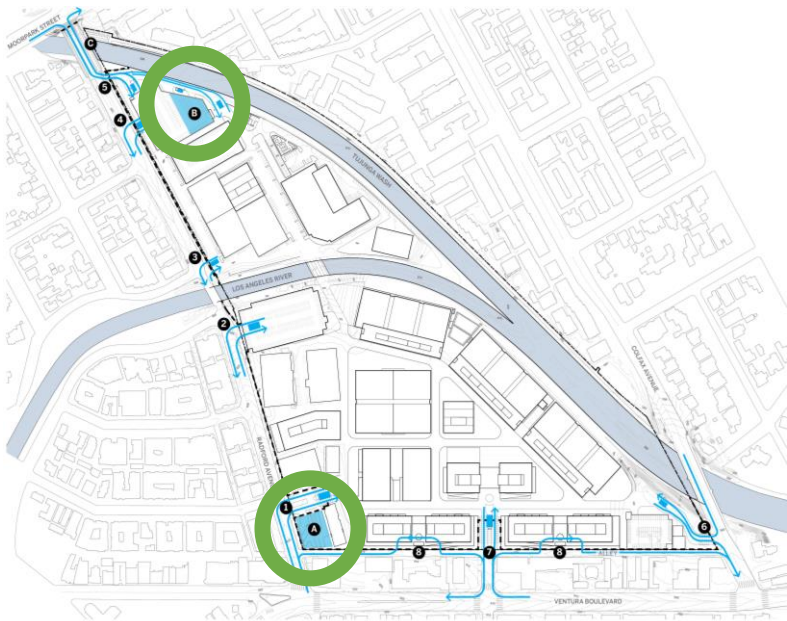
RIDESHARE

PROVIDE ONSITE MOBILITY HUB(S)



Mobility Hub Elements & Features

- Transportation information center/kiosks
- Carpool and vanpool parking and loading
- Shuttle loading
- Bicycle showers and lockers

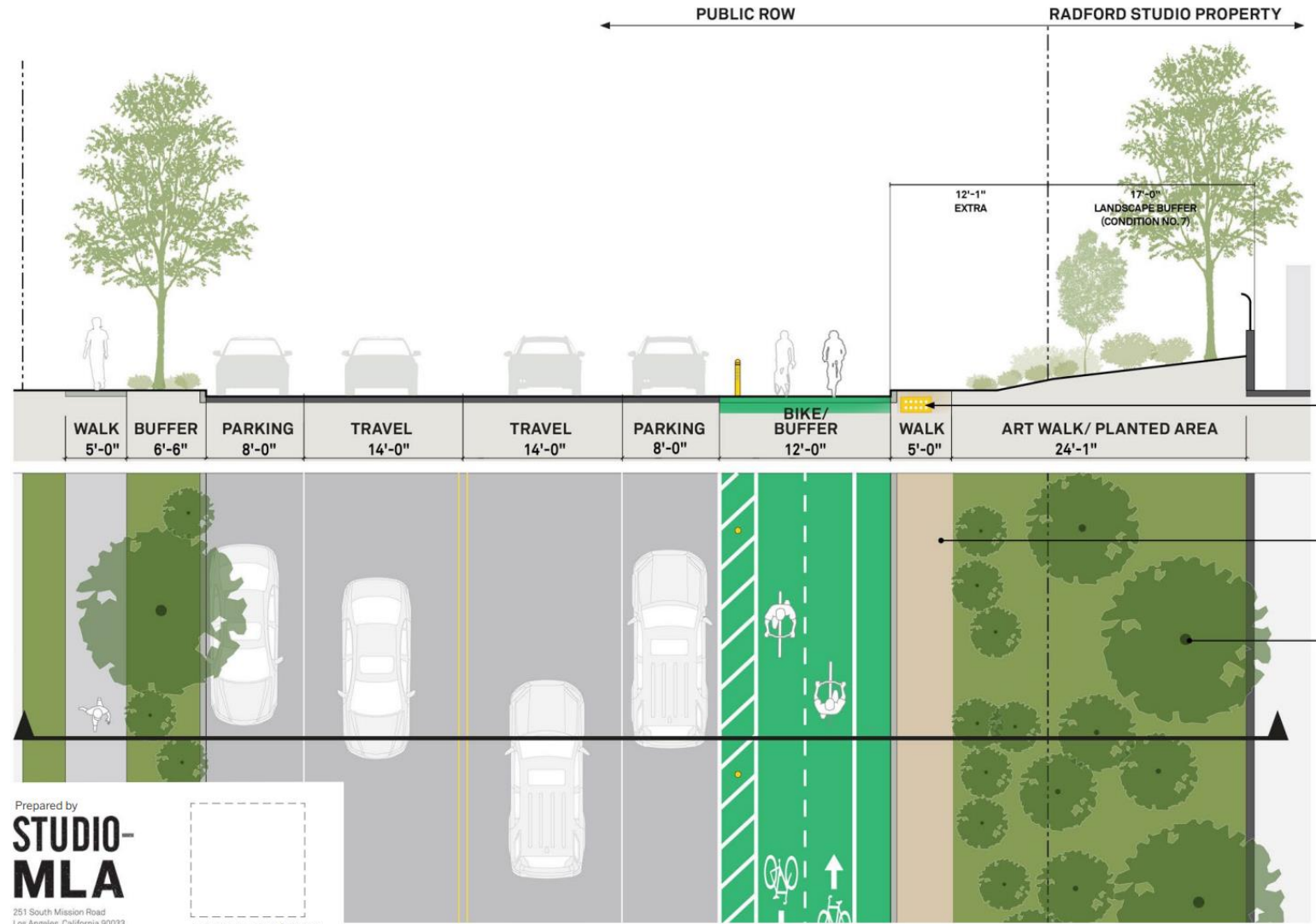


IMPROVE COMMUNITY BIKEABILITY & WALKABILITY



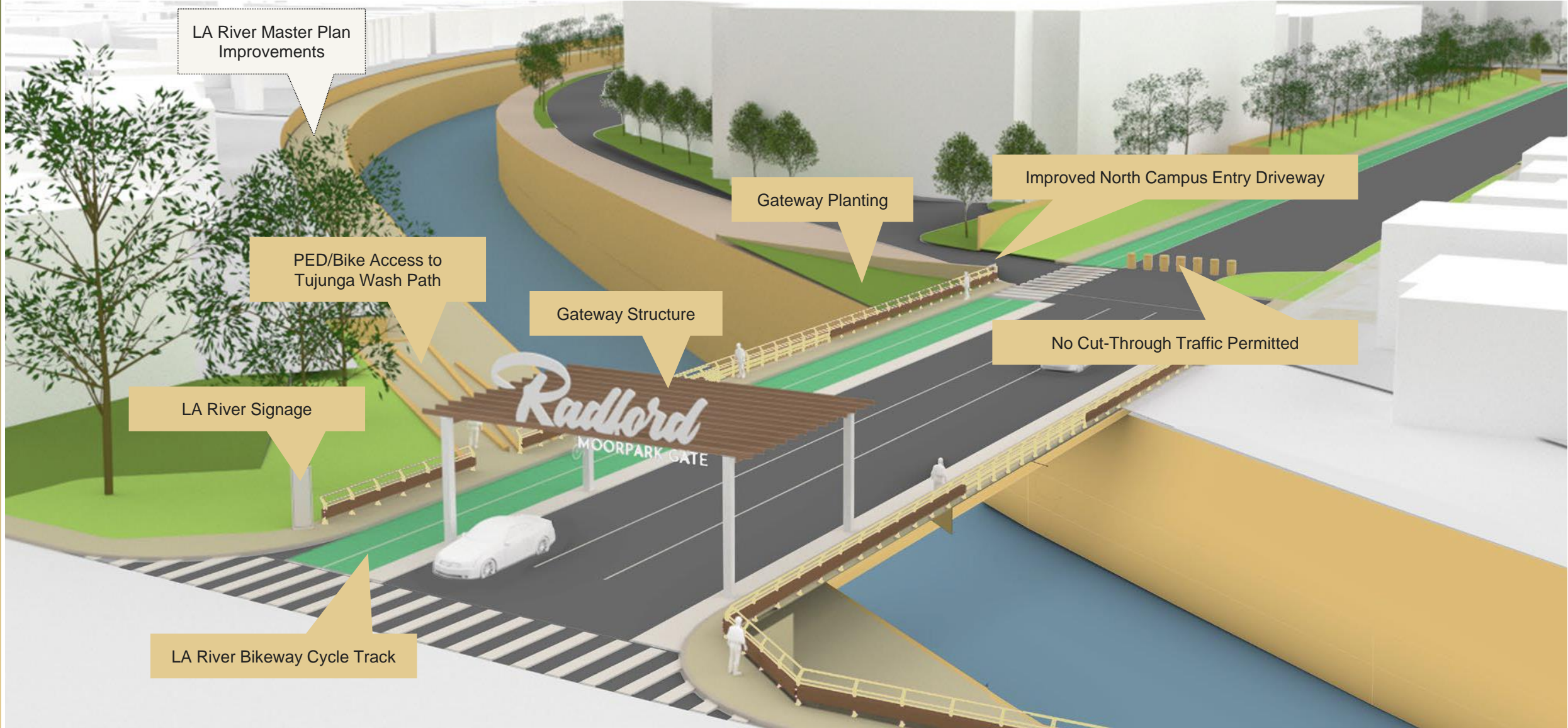
CONNECTING THE MISSING LINK OF THE LOS ANGELES RIVER MASTER PLAN

- Class IV bike lane on Radford Ave. from Hoffman St. to the Radford River Connector
- Connecting to the LA River Master Plan improved bike & pedestrian path along the Tujunga Wash and LA River



IMPROVE COMMUNITY BIKEABILITY & WALKABILITY

Radford



LA River Master Plan Improvements

Gateway Planting

Improved North Campus Entry Driveway

PED/Bike Access to Tujunga Wash Path

Gateway Structure

No Cut-Through Traffic Permitted

LA River Signage

Radford
MOORPARK GATE

LA River Bikeway Cycle Track

TONIGHT'S WORKSHOP

Radford

Additional Input

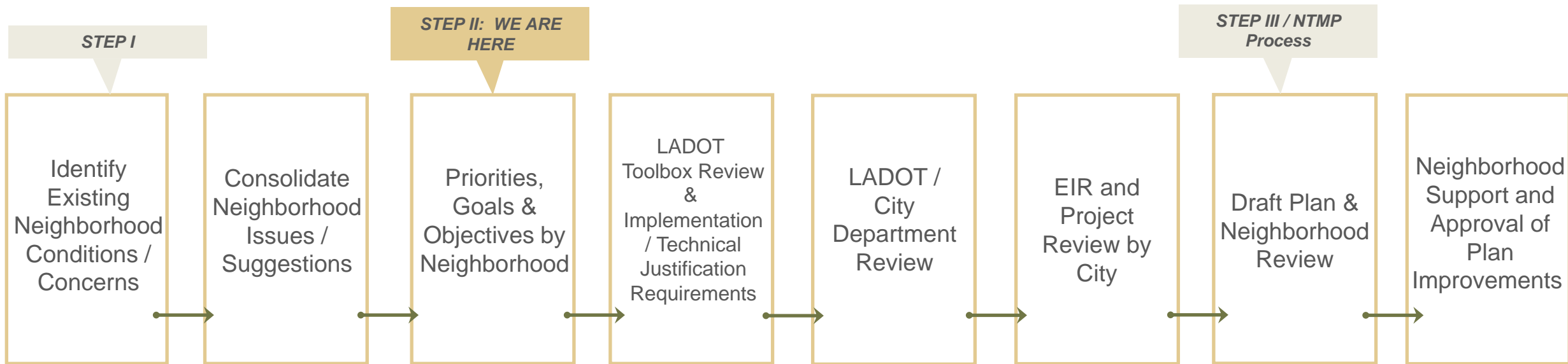
- Gather into the four neighborhoods
- Review idea maps and propose additional neighborhood suggestions
- Summarize neighborhood ideas
- Serve as the basis for future individual neighborhood plan development sessions

Neighborhood Workshop Groups:

- Radford: Pat & Brian
- Moorpark / Landale Square: Sarah & Lisa
- Colfax: Casey & Zach
- Ventura: Sean & Francis



As part of the planning and environmental clearance process, the Radford Studio Center (RSC) team is proactively working with the neighboring communities through the following LADOT Neighborhood Mobility Planning Process:



COMMUNITY MOBILITY PLANS -- NEXT STEPS



Next Steps

- DEIR Workshop – Q3 2024
- FEIR Publication by City – Q2 2025
- Planning Commission Hearing – Q3 2025
- City Council Hearings – Q4 2025
- Detailed Individual Community Mobility Planning & Design Sessions – 2026



A PREVIOUS COMMUNITY MEETING TO SHOWCASE THE PROJECT



Radford
STUDIO CENTER

THANK YOU

Hello @RadfordStudioCenter.com

(818) 626-5940

@RadfordStudioCenter  